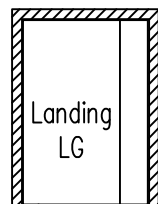
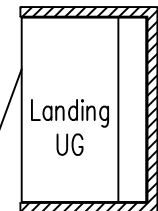
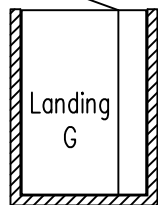
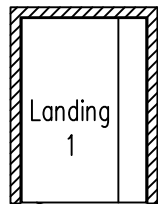
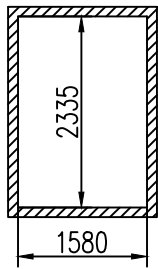
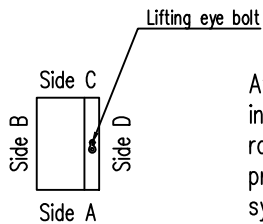
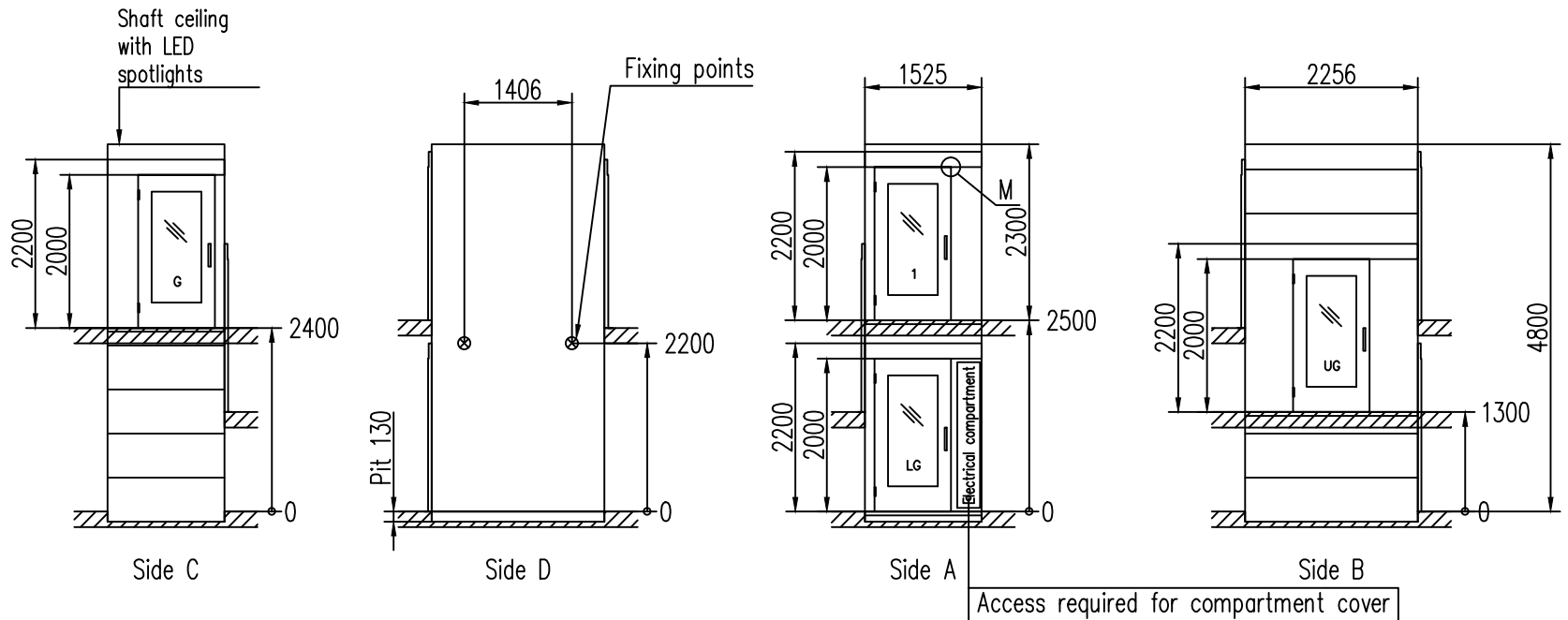


Shaft plan view



M= An additional 50 mm for clear structural opening is required.



At the start of the lift installation a lifting eye bolt for a rated load of 500 kg has to be provided at the position of the symbol marked on the drawing

Main power supply	3x400V 16A
Rated Power	4,0 kW / 8,8A
Type	Screw and nut driven
Rated speed	0,15 m/s
Rated Load	1000 Kg / 8 Pers
Control system	Hold to run

Drawn	Constr.	Shaftwall A8000		Scale	File name
				1:62	Date
			Dwg-nr	Sheet	
				1	